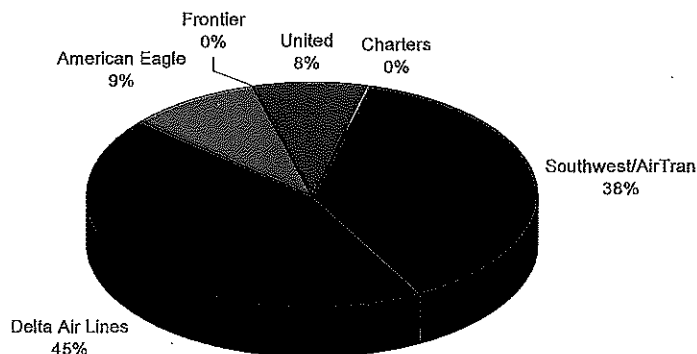


**BISHOP INTERNATIONAL AIRPORT AUTHORITY
AIRLINE PASSENGER COMPARISON
CALENDAR YEARS 2012 AND 2013**

ENPLANEMENTS	SOUTHWEST/AIRTRAN			DELTA			AMERICAN EAGLE		
	2012	2013	% Change	2012	2013	% Change	2012	2013	% Change
January	13,010	10,849	-16.61%	12,701	14,637	15.24%	3,130	3,081	-1.57%
February	16,359	12,708	-22.32%	14,091	15,000	6.45%	3,084	2,845	-7.75%
March	19,015	16,276	-14.40%	16,894	14,790	-12.45%	3,247	2,745	-15.46%
April	11,816	9,367	-20.73%	14,698	13,637	-7.22%	3,167	2,983	-5.81%
May	11,584	9,237	-20.26%	15,353	13,864	-9.70%	3,359	3,209	-4.47%
June	13,597	10,561	-22.33%	15,114	14,557	-3.69%	3,298	3,223	-2.27%
July	15,027	12,596	-16.18%	16,277	14,662	-9.92%	3,492	3,386	-3.04%
August	12,285	13,950	13.55%	17,936	15,088	-15.88%	3,552	3,431	-3.41%
September	8,240	11,476	39.27%	15,093	14,419	-4.47%	3,238	3,164	-2.29%
October	9,370	13,881	48.14%	16,707	15,558	-6.88%	3,396	3,323	-2.15%
November	12,578	13,931	10.76%	15,784	15,250	-3.38%	3,137	2,952	-5.90%
December	12,609	15,403	22.16%	13,870	14,394	3.78%	3,154	3,163	0.29%
Through December	155,490	150,235	-3.38%	170,648	175,856	3.05%	39,254	37,505	-4.46%

ENPLANEMENTS	FRONTIER			UNITED			CHARTERS		
	2012	2013	% Change	2012	2013	% Change	2012	2013	% Change
January	1,252	0	N/A	1,418	2,080	46.69%	158	0	N/A
February	1,016	0	N/A	1,700	2,155	26.76%	0	265	N/A
March	283	0	N/A	1,937	2,555	31.91%	0	158	N/A
April	0	0	N/A	1,960	2,155	9.95%	0	137	N/A
May	0	0	N/A	2,880	2,895	0.52%	136	0	N/A
June	0	0	N/A	3,222	3,145	-2.39%	0	0	N/A
July	0	0	N/A	3,015	3,119	3.45%	0	0	N/A
August	0	0	N/A	3,150	3,246	3.05%	156	159	1.92%
September	0	0	N/A	2,646	2,687	1.55%	0	0	N/A
October	0	0	N/A	2,901	2,873	-0.97%	145	158	8.97%
November	0	0	N/A	2,498	2,784	11.45%	152	0	N/A
December	0	0	N/A	1,789	2,921	63.28%	0	0	N/A
Through December	2,551	0	N/A	29,116	32,615	12.02%	747	877	N/A

**ENPLANEMENT SHARE BY AIRLINE
Calendar Year 2013**



	TOTAL		
	2012	2013	% Change
January	31,669	30,647	-3.23%
February	36,250	32,973	-9.04%
March	41,376	36,524	-11.73%
April	31,641	28,279	-10.63%
May	33,312	29,205	-12.33%
June	35,231	31,486	-10.63%
July	37,811	33,763	-10.71%
August	37,079	35,874	-3.25%
September	29,217	31,746	8.66%
October	32,519	35,793	10.07%
November	34,149	34,917	2.25%
December	31,422	35,881	14.19%
Through December	411,676	397,088	-3.54%
Total Year	411,676	397,088	

Southwest/AirTran
 Delta Air Lines
 American Eagle

Frontier
 United
 Charters

**BISHOP INTERNATIONAL AIRPORT AUTHORITY
AIRLINE LOAD FACTOR ANALYSIS**

December-13

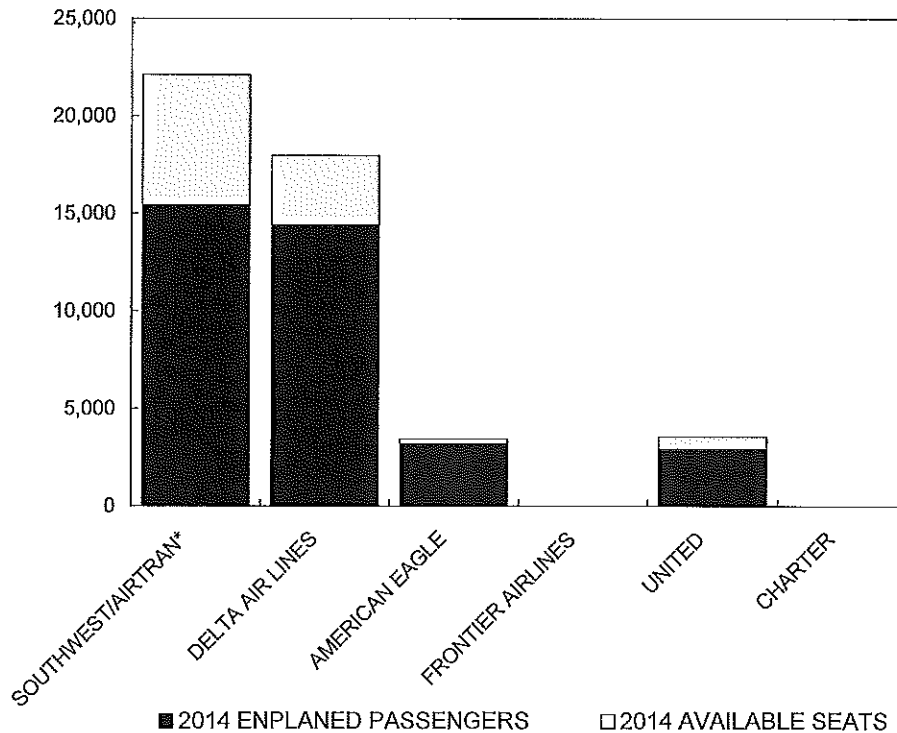
2012

2013

AIRLINE	AVAILABLE SEATS	ENPLANED PAX	LOAD FACTOR	AVAILABLE SEATS	ENPLANED PAX	LOAD FACTOR
SOUTHWEST/AIRTRAN*	16,614	12,609	75.89%	22,111	15,403	69.66%
DELTA AIR LINES	17,847	13,870	77.72%	17,969	14,394	80.10%
AMERICAN EAGLE	3,838	3,154	82.18%	3,438	3,163	92.00%
FRONTIER AIRLINES	0	0	0.00%	0	0	0.00%
UNITED	2,629	1,789	68.05%	3,560	2,921	82.05%
CHARTER	0	0	N/A	0	0	N/A
ALL AIRLINES	40,928	31,422	76.77%	47,078	35,881	76.22%

* Southwest's enplaned passenger statistics does not include thru passengers. As a result, the enplaned passenger and load factor statistics are artificially low.

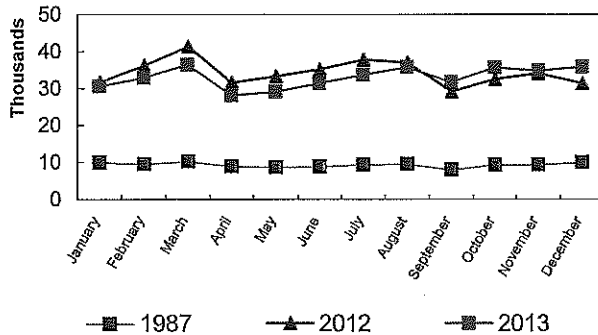
**Enplanements vs Available Seats
Current Month**



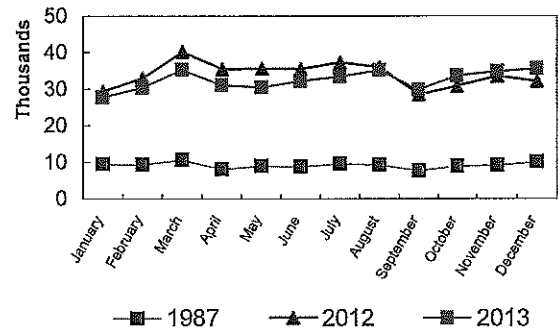
**BISHOP INTERNATIONAL AIRPORT
PASSENGER STATISTICAL COMPARISON
FOR THE YEARS 1987, 2012, 2013**

	ENPLANED PASSENGERS			% CHANGE	
	1987	2012	2013	1987/2013	2012/2013
January	10,008	31,669	30,647	206.23%	-3.23%
February	9,544	36,250	32,973	245.48%	-9.04%
March	10,287	41,376	36,524	255.05%	-11.73%
April	8,967	31,641	28,279	215.37%	-10.63%
May	8,685	33,312	29,205	236.27%	-12.33%
June	8,891	35,231	31,486	254.13%	-10.63%
July	9,372	37,811	33,763	260.25%	-10.71%
August	9,586	37,079	35,874	274.23%	-3.25%
September	8,038	29,217	31,746	294.95%	8.66%
October	9,350	32,519	35,793	282.81%	10.07%
November	9,402	34,149	34,917	271.38%	2.25%
December	10,010	31,422	35,881	258.45%	14.19%
Total thru December	102,130	380,254	397,088	288.81%	4.43%
Total for Year	112,140	411,676	397,088		

ENPLANEMENT COMPARISON
Pre-Authority vs 2012 & 2013



DEPLANEMENT COMPARISON
Pre-Authority vs 2012 & 2013



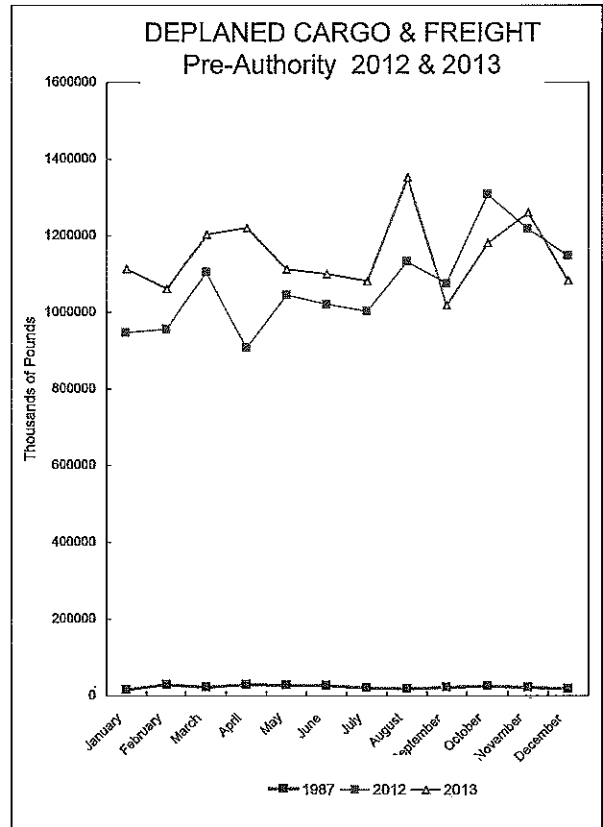
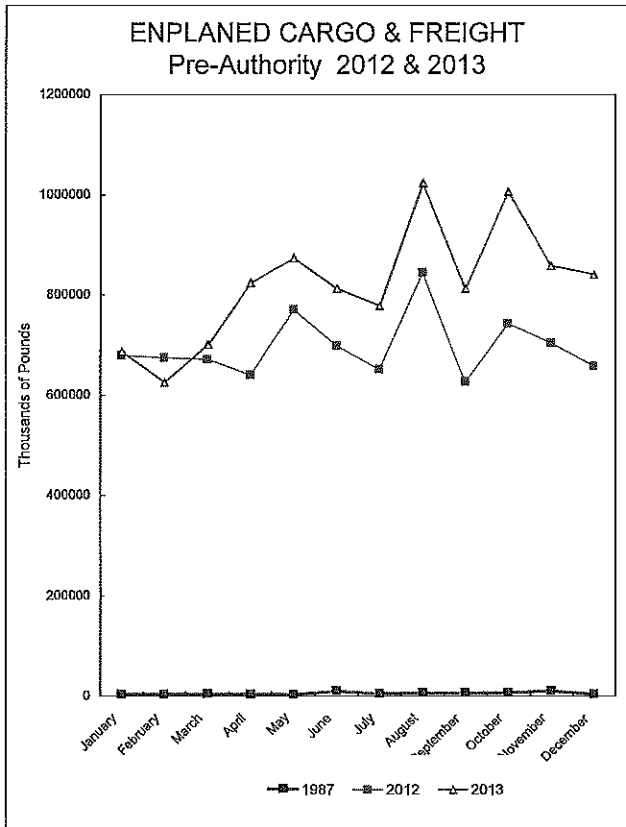
	DEPLANED PASSENGERS			% CHANGE	
	1987	2012	2013	1987/2013	2012/2013
January	9,542	29,441	27,892	192.31%	-5.26%
February	9,380	33,050	30,477	224.91%	-7.79%
March	10,646	40,321	35,406	232.58%	-12.19%
April	8,139	35,493	31,199	283.33%	-12.10%
May	8,969	35,683	30,630	241.51%	-14.16%
June	8,795	35,541	32,338	267.69%	-9.01%
July	9,592	37,420	33,562	249.90%	-10.31%
August	9,331	36,058	35,312	278.44%	-2.07%
September	7,740	28,583	30,013	287.76%	5.00%
October	9,005	30,968	33,799	275.34%	9.14%
November	9,235	33,618	34,996	278.95%	4.10%
December	10,114	32,246	35,711	253.08%	10.75%
Total thru December	100,374	376,176	391,335	289.88%	4.03%
Total for Year	110,488	408,422	391,335		

Total all current month	202,504	756,430	788,423
Total all for the year	222,628	820,098	788,423

BISHOP INTERNATIONAL AIRPORT AIR CARGO AND FREIGHT COMPARISON Pre-Authority(1987) 2012 & 2013

TOTAL AIR CARGO AND FREIGHT

	ENPLANED CARGO & FREIGHT			% Change		DEPLANED CARGO & FREIGHT			% Change	
	1987	2012	2013	87-2013	2012-2013	1987	2012	2013	87-2013	2012-2013
January	3,660	679,116	687,353	18680.14%	1.21%	16,557	947,207	1,113,247	6623.72%	17.53%
February	3,582	674,955	626,624	17365.77%	-7.31%	30,397	956,307	1,061,183	3391.08%	10.97%
March	4,268	671,953	701,143	16327.91%	4.34%	23,013	1,105,392	1,203,524	5129.76%	8.88%
April	3,747	640,419	824,495	21904.14%	28.74%	30,094	908,072	1,220,415	3955.34%	34.40%
May	3,219	771,005	873,697	27041.88%	13.32%	28,459	1,045,167	1,111,835	3806.80%	6.36%
June	9,901	699,389	812,942	8110.71%	16.24%	27,135	1,021,289	1,099,705	3952.72%	7.68%
July	5,316	652,308	778,106	14537.06%	19.29%	21,325	1,003,411	1,081,328	4970.71%	7.77%
August	6,299	845,386	1,023,788	16153.18%	21.10%	19,064	1,133,077	1,352,318	6993.57%	19.35%
September	6,509	627,102	812,578	12383.91%	29.58%	23,494	1,075,660	1,018,660	4235.83%	-5.30%
October	7,148	743,116	1,006,432	13979.91%	35.43%	26,707	1,309,254	1,181,261	4323.04%	-9.78%
November	10,254	704,277	858,131	8268.74%	21.85%	22,817	1,218,743	1,260,892	5426.11%	3.46%
December	3,905	668,228	840,598	21426.20%	27.71%	19,423	1,148,556	1,083,208	5476.93%	-5.69%
Total thru December	67,808	8,367,254	9,844,887	14418.77%	17.66%	288,485	12,872,135	13,787,576	4679.30%	7.11%
Annual Total	67,808	8,367,254	9,844,887			288,485	12,872,135	13,787,576		



FEDEX

	ENPLANED CARGO & FREIGHT					DEPLANED CARGO & FREIGHT				
	1987	2012	2013	% Change 87-2013	% Change 2012-2013	1987	2012	2013	% Change 87-2013	% Change 2012-2013
January	0	642,380	650,713	N/A	1.30%	0	924,102	1,090,803	N/A	18.04%
February	0	608,632	591,682	N/A	-2.78%	0	933,983	1,042,521	N/A	11.62%
March	0	632,032	665,983	N/A	5.37%	0	1,076,209	1,180,073	N/A	9.65%
April	0	603,006	786,924	N/A	30.50%	0	881,605	1,198,554	N/A	35.95%
May	0	729,180	832,556	N/A	0.1417702	0	1,013,981	1,091,313	N/A	7.63%
June	0	657,163	777,890	N/A	18.37%	0	989,788	1,080,555	N/A	9.17%
July	0	609,695	739,136	N/A	21.23%	0	976,116	1,060,037	N/A	8.60%
August	0	793,413	973,875	N/A	22.75%	0	1,102,618	1,328,479	N/A	20.48%
September	0	592,389	779,857	N/A	31.65%	0	1,050,894	995,179	N/A	-5.30%
October	0	705,983	968,215	N/A	37.14%	0	1,276,318	1,148,410	N/A	-10.02%
November	0	670,741	819,954	N/A	22.25%	0	1,192,072	1,231,976	N/A	3.35%
December	0	607,127	786,698	N/A	29.58%	0	1,123,427	1,059,604	N/A	-5.68%
Total thru December	0	7,851,741	9,373,483	N/A	19.38%	0	12,541,113	13,507,504	N/A	7.71%

GVA

	ENPLANED CARGO & FREIGHT					DEPLANED CARGO & FREIGHT				
	1987	2012	2013	% Change 87-2013	% Change 2012-2013	1987	2012	2013	% Change 87-2013	% Change 2012-2013
January	0	0	0	N/A	N/A	0	0	0	N/A	N/A
February	0	31,877	0	N/A	N/A	0	379	0	N/A	N/A
March	0	64	0	N/A	N/A	0	725	0	N/A	N/A
April	0	0	0	N/A	N/A	0	0	0	N/A	N/A
May	0	0	0	N/A	N/A	0	0	0	N/A	N/A
June	0	0	0	N/A	N/A	0	0	0	N/A	N/A
July	0	0	0	N/A	N/A	0	0	0	N/A	N/A
August	0	0	0	N/A	N/A	0	0	0	N/A	N/A
September	0	0	0	N/A	N/A	0	0	0	N/A	N/A
October	0	0	0	N/A	N/A	0	0	0	N/A	N/A
November	0	0	0	N/A	N/A	0	0	0	N/A	N/A
December	0	0	0	N/A	N/A	0	0	0	N/A	N/A
Total thru December	0	31,941	0	N/A	N/A	0	1,104	0	N/A	N/A

DELTA/ASA

	ENPLANED CARGO & FREIGHT					DEPLANED CARGO & FREIGHT				
	1987	2012	2013	% Change 87-2013	% Change 2012-2013	1987	2012	2013	% Change 87-2013	% Change 2012-2013
January	0	119	23	N/A	-80.67%	0	798	283	N/A	-64.54%
February	0	203	20	N/A	-90.15%	0	1,195	275	N/A	-76.99%
March	0	334	0	N/A	N/A	0	1,258	0	N/A	N/A
April	0	130	90	N/A	-30.77%	0	627	190	N/A	-69.70%
May	0	266	22	N/A	-91.41%	0	626	47	N/A	-92.49%
June	0	0	0	N/A	N/A	0	713	92	N/A	-87.10%
July	0	224	20	N/A	-91.07%	0	372	479	N/A	28.76%
August	0	406	109	N/A	-73.15%	0	935	308	N/A	-67.06%
September	0	383	184	N/A	-51.96%	0	1,080	101	N/A	-90.65%
October	0	144	132	N/A	-8.33%	0	486	293	N/A	-39.71%
November	0	317	294	N/A	-7.26%	0	405	336	N/A	-17.04%
December	0	161	119	N/A	N/A	0	271	79	N/A	N/A
Total thru December	0	2,677	1,013	N/A	-62.16%	0	8,766	2,483	N/A	-71.67%

AMERICAN EAGLE/CONN

	ENPLANED CARGO & FREIGHT					DEPLANED CARGO & FREIGHT				
	1987	2012	2013	% Change 87-2013	% Change 2012-2013	1987	2012	2013	% Change 87-2013	% Change 2012-2013
January	0	0	0	N/A	N/A	0	642	516	N/A	-19.63%
February	0	0	0	N/A	N/A	0	216	218	N/A	0.93%
March	0	0	0	N/A	N/A	0	325	427	N/A	31.38%
April	0	0	0	N/A	N/A	0	338	292	N/A	-13.61%
May	0	0	0	N/A	N/A	0	307	0	N/A	N/A
June	0	0	0	N/A	N/A	0	733	324	N/A	-55.80%
July	0	0	0	N/A	N/A	0	89	0	N/A	N/A
August	0	0	0	N/A	N/A	0	0	171	N/A	N/A
September	0	0	0	N/A	N/A	0	141	593	N/A	320.57%
October	0	0	0	N/A	N/A	0	176	0	N/A	N/A
November	0	0	980	N/A	N/A	0	183	432	N/A	136.07%
December	0	0	0	N/A	N/A	0	313	464	N/A	48.24%
Total thru December	0	0	980	N/A	N/A	0	3,463	3,437	N/A	-0.75%

Northwest

	ENPLANED CARGO & FREIGHT					DEPLANED CARGO & FREIGHT				
	1987	2012	2013	% Change 87-2013	% Change 2012-2013	1987	2012	2013	% Change 87-2013	% Change 2012-2013
January	120	0	0	N/A	N/A	837	0	0	N/A	N/A
February	310	0	0	N/A	N/A	1,649	0	0	N/A	N/A
March	256	0	0	N/A	N/A	2,098	0	0	N/A	N/A
April	0	0	0	N/A	N/A	0	0	0	N/A	N/A
May	0	0	0	N/A	N/A	0	0	0	N/A	N/A
June	0	0	0	N/A	N/A	0	0	0	N/A	N/A
July	0	0	0	N/A	N/A	0	0	0	N/A	N/A
August	0	0	0	N/A	N/A	0	0	0	N/A	N/A
September	0	0	0	N/A	N/A	0	0	0	N/A	N/A
October	0	0	0	N/A	N/A	0	0	0	N/A	N/A
November	0	0	0	N/A	N/A	0	0	0	N/A	N/A
December	0	0	0	N/A	N/A	0	0	0	N/A	N/A
Total thru December	686	0	0	-100.00%	N/A	4,584	0	0	-100.00%	N/A

FRONTIER AIRLINES

	ENPLANED CARGO & FREIGHT					DEPLANED CARGO & FREIGHT				
	1987	2012	2013	% Change 87-2013	% Change 2012-2013	1987	2012	2013	% Change 87-2013	% Change 2012-2013
January	0	0	0	N/A	N/A	0	20	0	N/A	N/A
February	0	0	0	N/A	N/A	0	36	0	N/A	N/A
March	0	0	0	N/A	N/A	0	0	0	N/A	N/A
April	0	0	0	N/A	N/A	0	0	0	N/A	N/A
May	0	0	0	N/A	N/A	0	0	0	N/A	N/A
June	0	0	0	N/A	N/A	0	0	0	N/A	N/A
July	0	0	0	N/A	N/A	0	0	0	N/A	N/A
August	0	0	0	N/A	N/A	0	0	0	N/A	N/A
September	0	0	0	N/A	N/A	0	0	0	N/A	N/A
October	0	0	0	N/A	N/A	0	0	0	N/A	N/A
November	0	0	0	N/A	N/A	0	0	0	N/A	N/A
December	0	0	0	N/A	N/A	0	0	0	N/A	N/A
Total thru December	0	0	0	N/A	N/A	0	56	0	N/A	-100.00%

CSA Air, Inc.

	ENPLANED CARGO & FREIGHT					DEPLANED CARGO & FREIGHT				
	1987	2012	2013	% Change 87-2013	% Change 2012-2013	1987	2012	2013	% Change 87-2013	% Change 2012-2013
January	0	36,617	36,617	N/A	0.00%	0	21,645	21,645	N/A	0.00%
February	0	34,243	33,922	N/A	-0.94%	0	20,498	18,169	N/A	-11.36%
March	0	39,523	35,160	N/A	-11.04%	0	26,875	23,024	N/A	-14.33%
April	0	37,283	37,481	N/A	0.53%	0	25,502	21,379	N/A	-16.17%
May	0	41,569	41,119	N/A	-1.08%	0	30,253	20,475	N/A	-32.32%
June	0	42,226	35,052	N/A	-16.99%	0	30,055	18,734	N/A	-37.67%
July	0	42,389	38,950	N/A	-8.11%	0	26,834	20,812	N/A	-22.44%
August	0	51,567	49,804	N/A	-3.42%	0	29,524	23,360	N/A	-20.88%
September	0	34,330	32,537	N/A	-5.22%	0	23,545	22,787	N/A	-3.22%
October	0	36,989	38,085	N/A	2.96%	0	32,274	32,558	N/A	0.88%
November	0	33,219	36,903	N/A	11.09%	0	26,083	28,148	N/A	7.92%
December	0	50,940	53,781	N/A	5.58%	0	24,545	23,061	N/A	-6.05%
Total thru December	0	480,895	469,411	N/A	-2.39%	0	317,633	274,152	N/A	-13.69%

SOUTHWEST/AIRTRAN

	ENPLANED CARGO & FREIGHT					DEPLANED CARGO & FREIGHT				
	1987	2012	2013	% Change 87-2013	% Change 2012-2013	1987	2012	2013	% Change 87-2013	% Change 2012-2013
January	0	0	0	N/A	N/A	0	0	0	N/A	N/A
February	0	0	0	N/A	N/A	0	0	0	N/A	N/A
March	0	0	0	N/A	N/A	0	0	0	N/A	N/A
April	0	0	0	N/A	N/A	0	0	0	N/A	N/A
May	0	0	0	N/A	N/A	0	0	0	N/A	N/A
June	0	0	0	N/A	N/A	0	0	0	N/A	N/A
July	0	0	0	N/A	N/A	0	0	0	N/A	N/A
August	0	0	0	N/A	N/A	0	0	0	N/A	N/A
September	0	0	0	N/A	N/A	0	0	0	N/A	N/A
October	0	0	0	N/A	N/A	0	0	0	N/A	N/A
November	0	0	0	N/A	N/A	0	0	0	N/A	N/A
December	0	0	0	N/A	N/A	0	0	0	N/A	N/A
Total thru December	0	0	0	N/A	N/A	0	0	0	N/A	N/A

PRIOR CARRIERS

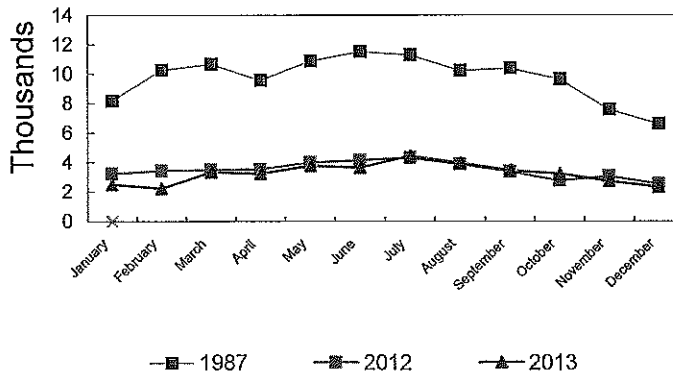
	ENPLANED CARGO & FREIGHT					DEPLANED CARGO & FREIGHT				
	1987	2012	2013	% Change 87-2013	% Change 2012-2013	1987	2012	2013	% Change 87-2013	% Change 2012-2013
January	3,540	0	0	N/A	N/A	15,720	0	0	N/A	N/A
February	3,272	0	0	N/A	N/A	28,748	0	0	N/A	N/A
March	4,012	0	0	N/A	N/A	20,915	0	0	N/A	N/A
April	3,747	0	0	N/A	N/A	30,094	0	0	N/A	N/A
May	3,219	0	0	N/A	N/A	28,459	0	0	N/A	N/A
June	9,901	0	0	N/A	N/A	27,135	0	0	N/A	N/A
July	5,316	0	0	N/A	N/A	21,325	0	0	N/A	N/A
August	6,299	0	0	N/A	N/A	19,064	0	0	N/A	N/A
September	6,509	0	0	N/A	N/A	23,494	0	0	N/A	N/A
October	7,148	0	0	N/A	N/A	26,707	0	0	N/A	N/A
November	10,254	0	0	N/A	N/A	22,817	0	0	N/A	N/A
December	3,905	0	0	N/A	N/A	19,423	0	0	N/A	N/A
Total thru December	67,122	0	0	N/A	N/A	283,901	0	0	N/A	N/A

OPERATIONS STATISTICAL COMPARISON

FOR YEARS 1987, 2012 & 2013

	1987 OPERATIONS	2012 OPERATIONS	2013 OPERATIONS	CHANGE 1987/2013	CHANGE 2012/2013
January	8,177	3,229	2,514	-69.26%	-22.14%
February	10,270	3,427	2,249	-78.10%	-34.37%
March	10,677	3,510	3,342	-68.70%	-4.79%
April	9,562	3,546	3,237	-66.15%	-8.71%
May	10,870	4,010	3,782	-65.21%	-5.69%
June	11,514	4,150	3,653	-68.27%	-11.98%
July	11,296	4,334	4,450	-60.61%	2.68%
August	10,240	3,901	3,976	-61.17%	1.92%
September	10,389	3,383	3,451	-66.78%	2.01%
October	9,656	2,770	3,234	-66.51%	16.75%
November	7,592	3,063	2,739	-63.92%	-10.58%
December	6,608	2,535	2,332	-64.71%	-8.01%
Total Through December	116,851	41,858	38,959	-66.66%	-6.93%
ANNUAL TOTAL	116,851	41,858	38,959		

OPERATIONS Pre-Authority vs 2012 & 2013



**BISHOP INTERNATIONAL AIRPORT
AIR TRAFFIC RECORD 2013**

MONTH	ITINERANT AIRCRAFT				LOCAL AIRCRAFT				TOTAL OPERATIONS	CUMULATIVE OPERATIONS
	AIR CARRIER	AIR TAXI	GENERAL AVIATION	MILITARY	TOTAL ITINERANT	CIVILIAN	MILITARY	TOTAL LOCAL		
JANUARY	433	661	890	2	1,986	528	0	528	2,514	2,514
FEBRUARY	446	655	770	2	1,873	376	0	376	2,249	2,249
MARCH	531	743	1,371	3	2,648	694	0	694	3,342	3,342
APRIL	500	688	1,099	0	2,287	950	0	950	3,237	3,237
MAY	512	786	1,631	15	2,944	838	0	838	3,782	3,782
JUNE	487	787	1,615	10	2,899	754	0	754	3,653	3,653
JULY	520	842	1,790	0	3,152	1,298	0	1,298	4,450	4,450
AUGUST	537	880	1,545	14	2,976	1,000	0	1,000	3,976	3,976
SEPTEMBER	521	792	1,371	5	2,689	762	0	762	3,451	3,451
OCTOBER	539	834	1,321	0	2,694	540	0	540	3,234	3,234
NOVEMBER	534	791	1,074	14	2,413	326	0	326	2,739	2,739
DECEMBER	533	727	866	4	2,130	202	0	202	2,332	2,332
TOTALS	6,093	9,186	15,343	69	30,691	8,268	0	8,268	38,959	